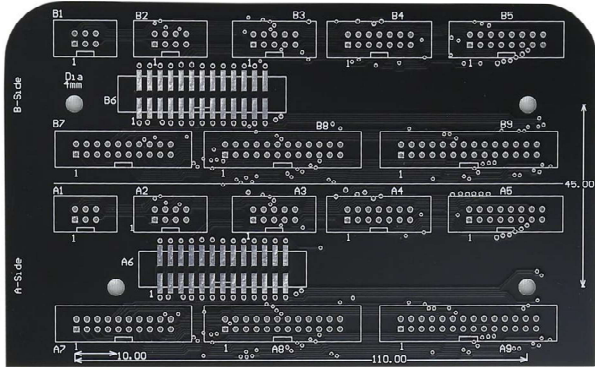


64-Pin Mixed Connector Board (64pMx)

Board Size:	144mm x 90mm
Board thickness:	1.6mm
Mounting hole dia:	4mm
Board material:	FR4
Mounting hole distance:	110mm, 100mm & 45mm
Number of layer:	2
Copper thickness:	35micron
Board surface finish:	HASL
Solder mask colour:	Black
General Aesthetic look:	Free from scratches and dust
Electrical Test:	Free from shorts & opens

A-side Connector	B-side Connector	Connector Detail	PartNumber
P131	P124	Pitch1.25mm, 1x15 pol, TH,180deg,Molex	53047-1510
P127	P113	Pitch1.27mm, 1x10 pol, TH,180deg,Molex	90325-0010
P118	P115	Pitch1.27mm, 2x17, 34 pol, TH,180deg,Wurth	62703421621
P119	P126	Pitch1.27mm, 2x14, 28 pol, SMD,180deg,Wurth	62132821021
P133	P114	Pitch2.0mm, 1x10 pol, SMD,180deg,Molex	505575-1081
P100	P109	Pitch2.54mm, 2x32, 64pol, TH,180deg,Wurth	61206421621
P101	P108	Pitch2.54mm, 2x25, 50pol, SMD,180deg,Wurth	62105021021
P111	P116	Pitch2.00mm, 2x20, 40pol, TH,180deg,Connfly	DS1026-05-2*20S8BV
P112	P117	Pitch2.00mm, 2x20, 40pol, SMD,180deg,Samtech	TMM-120-01-T-D
P103	P106	Pitch1.5mm, 1x10 pol, SMD,180deg,Jointtech	A1500WR-S-10P
P104	P105	Pitch1.0mm, 1x10 pol, SMD,180deg,Jointtech	A1001WV-S-10P
P102	P107	Pitch1.25mm, 1x14 pol, SMD,180deg,HiroseConnector	DF13C-14P-1.25V(21)
P129	P122	Pitch2.54mm, 1x20 pol, TH,180deg,Amphenol	10129378-920001BLF
P130	P123	Pitch2.54mm, 1x16 pol, SMD,180deg,Wurth	61001618221
P128	P121	Pitch2.0mm, 1x20 pol, TH,180deg, 3M	951120-8622-AR

64pMx / 6p28 / 34p64 /28p34

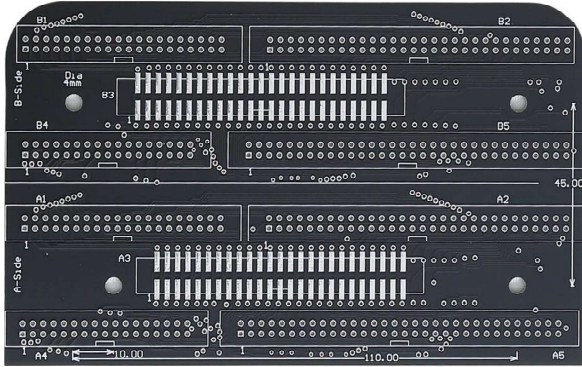


6 to 28-pin Connector Board (6p28)

Board Size:	144mm x 90mm
Board thickness:	1.6mm
Mounting hole dia:	4mm
Board material:	FR4
Mounting hole distance:	110mm, 100mm & 45mm
Number of layer:	2
Copper thickness:	35micron
Board surface finish:	HASL
Solder mask colour:	Black
General Aesthetic look:	Free from scratches and dust
Electrical Test:	Free from shorts & opens

A-side Connector	B-side Connector	Connector Detail	PartNumber
A1	B1	Pitch 2.54mm, 2x6, 12pol, TH,180deg,Amphenol	T821106A1S100CEU
A2	B2	Pitch 2.54mm, 2x4, 8pol, TH,180deg,Amphenol	T821108A1S100CEU
A3	B3	Pitch 2.54mm, 2x5, 10pol, TH,180deg,Connfly	DS1013-10SSIB1-B-0
A4	B4	Pitch 2.54mm, 2x7, 14pol, TH,180deg,Connfly	DS1013-14SSIBG
A5	B5	Pitch 2.54mm, 2x8, 16pol, TH,180deg,ADAM TECH	BHR-16-VUA
A6	B6	Pitch 2.54mm, 2x13, 26pol, SMD,180deg,Amphenol	72454-026VLF
A7	B7	Pitch 2.54mm, 2x10, 20pol, TH,180deg,Connfly	DS1013-20SSIB1-B-0
A8	B8	Pitch 2.54mm, 2x12, 24pol, TH,180deg,Amphenol	T821124A1S100CEU
A9	B9	Pitch 2.54mm, 2x14, 28pol, TH,180deg,Samtec	TSS-114-01-T-D

64pMx / 6p28 / 34p64 /28p34

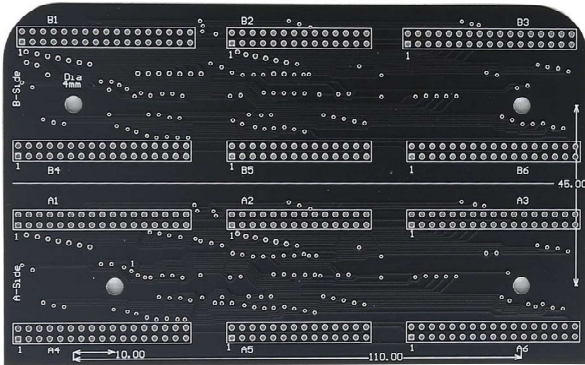


34 to 64-pin Connector Board (34p64)

Board Size:	144mm x 90mm
Board thickness:	1.6mm
Mounting hole dia:	4mm
Board material:	FR4
Mounting hole distance:	110mm, 100mm & 45mm
Number of layer:	2
Copper thickness:	35micron
Board surface finish:	HASL
Solder mask colour:	Black
General Aesthetic look:	Free from scratches and dust
Electrical Test:	Free from shorts & opens

A-side Connector	B-side Connector	Connector Detail	PartNumber
A1	B1	Pitch 2.54mm, 2x20, 40pol, TH,180deg, Connfly	DS1013-40SSIB1-B-0
A2	B2	Pitch 2.54mm, 2x30, 60pol, TH,180deg, Wurth	61206021621
A3	B3	Pitch 2.54mm, 2x25, 50pol, TH,180deg,Connfly	DS1013-50SSIB1
A4	B4	Pitch 2.54mm, 2x17, 34pol, TH,180deg, Connfly	DS1013-34SSIB1-B-0
A5	B5	Pitch 2.54mm, 2x32, 64pol, TH,180deg, 3M	N2564-6003RB

64pMx / 6p28 / 34p64 /28p34

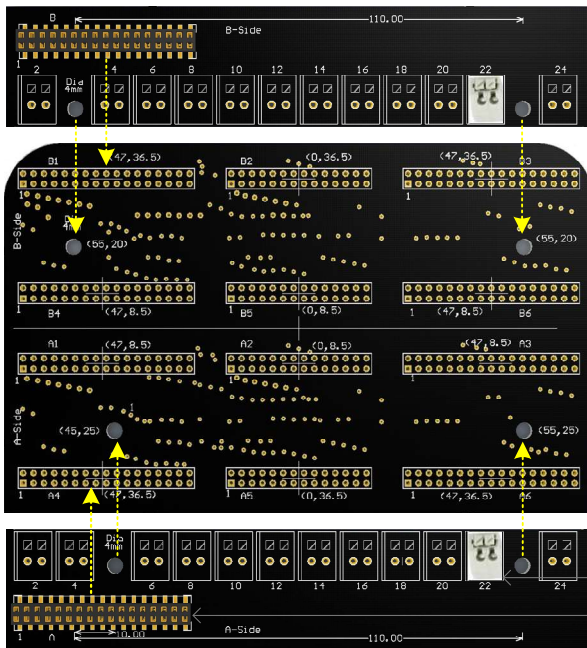


28 & 34-pin Connector Board (28p34)

Board Size:	144mm x 90mm
Board thickness:	1.6mm
Mounting hole dia:	4mm
Board material:	FR4
Mounting hole distance:	110mm, 100mm & 45mm
Number of layer:	2
Copper thickness:	35micron
Board surface finish:	HASL
Solder mask colour:	Black
General Aesthetic look:	Free from scratches and dust
Electrical Test:	Free from shorts & opens

A-side Connector	B-side Connector	Connector Detail	PartNumber
A1, A3, A4, A6	B1, B3, B4, B6	Pitch 2.54mm, 2x17, 34pol, TH,180deg, Sullins	PREC017DAAN-RC
A2,A5	B2,B5	Pitch 2.54mm, 2x14, 28pol, TH,180deg, Wurth	61302821121

NEW connectors continuity test configuration

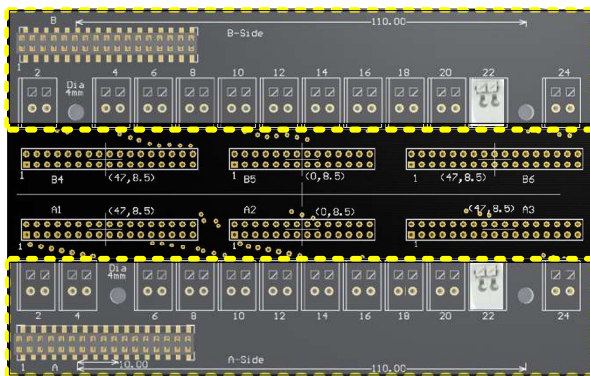


← Design example for Terminal Block connector (Part No EB59A-1-02-A-R)
Design a small PCB with connector B (left corner) pins connected to the terminal block pins as per the requirement. Users can configure any connector in the place of the terminal block same as shown in this example.

← Connector Board (28p34)

Terminal Block Part No EB59A-1-02-A-R

Use removable connector Part Number 610034243021 (or) Solder directly to the base board (28p34) using header pins.



← New connector placement is shown.
Small PCB placed over the Baseboard (28p34)